

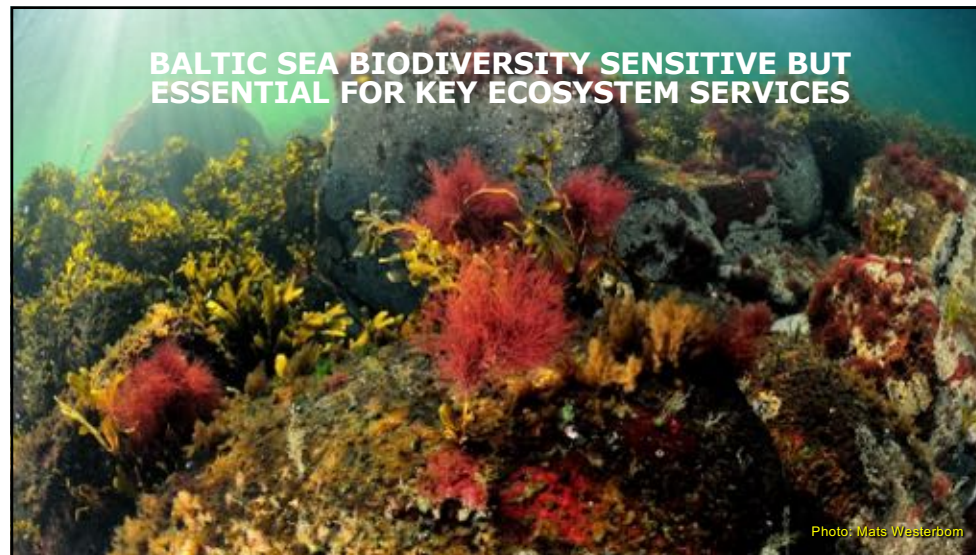
1



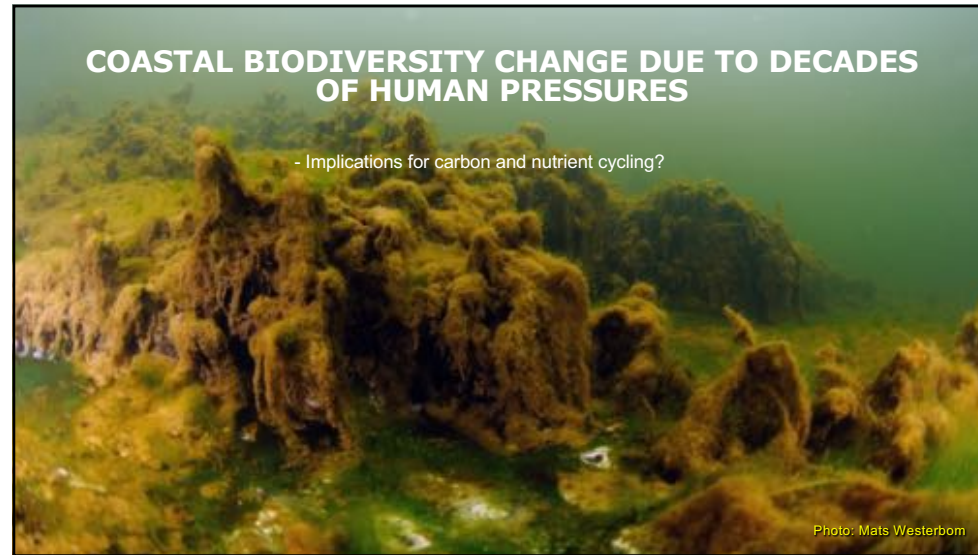
2



3



4

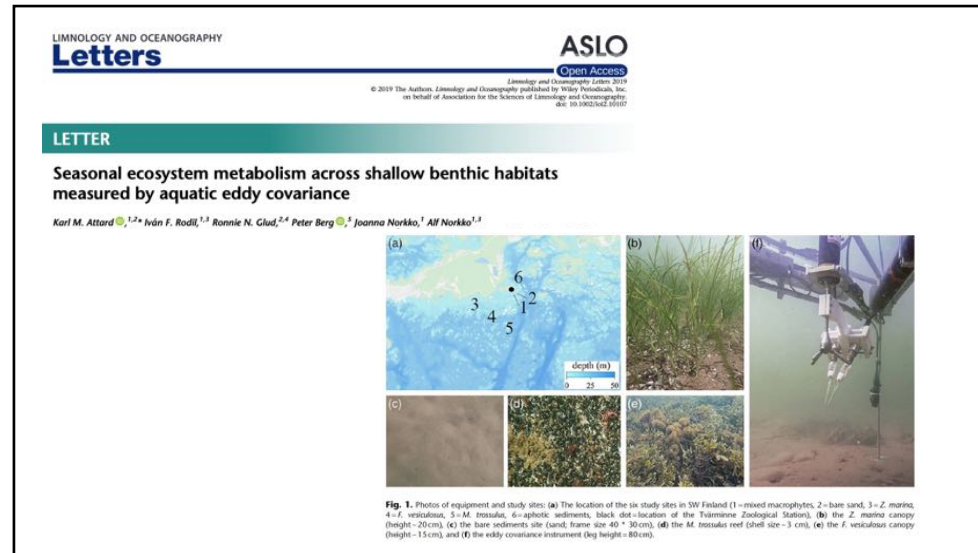


5

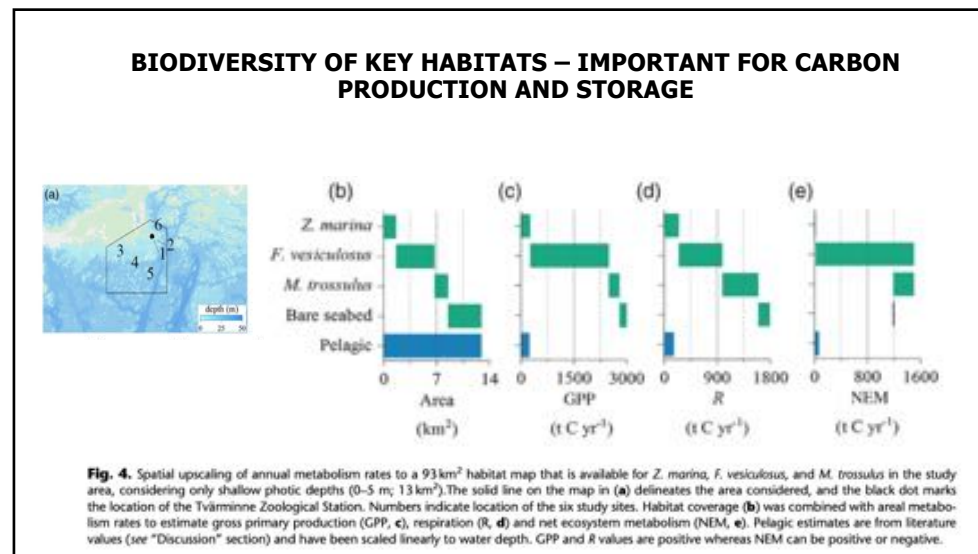
UNDERSTANDING BIODIVERSITY-ECOSYSTEM METABOLISM RELATIONSHIPS ACROSS COASTAL SEASCAPES

Attard *et al.* (2019) Seasonal metabolism and carbon export potential of a key coastal habitat: The perennial canopy-forming macroalgae *Fucus vesiculosus*. *Limnology and Oceanography*
 Rodil *et al.* (2019) Towards a sampling design for characterizing habitat-specific benthic biodiversity related to oxygen flux dynamics using Aquatic Eddy Covariance. *PlosOne*

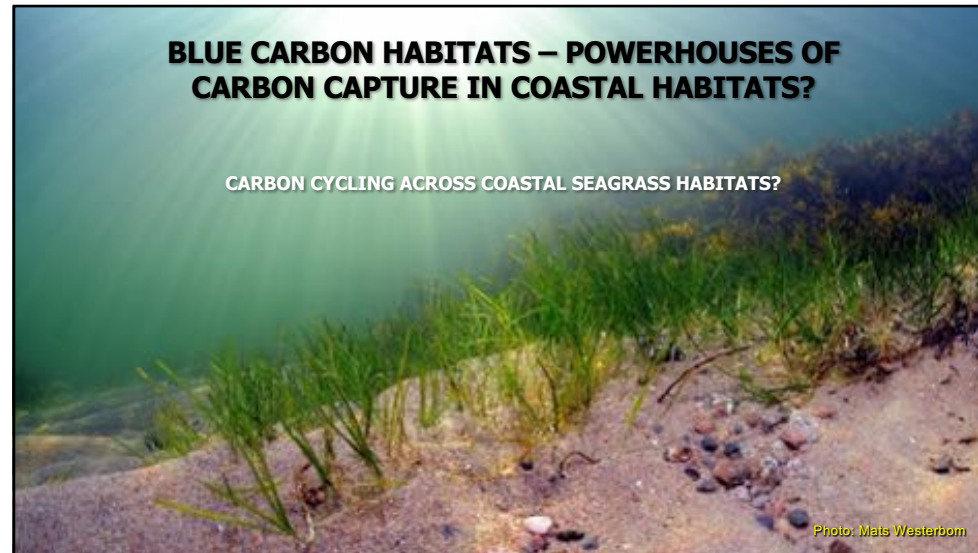
6



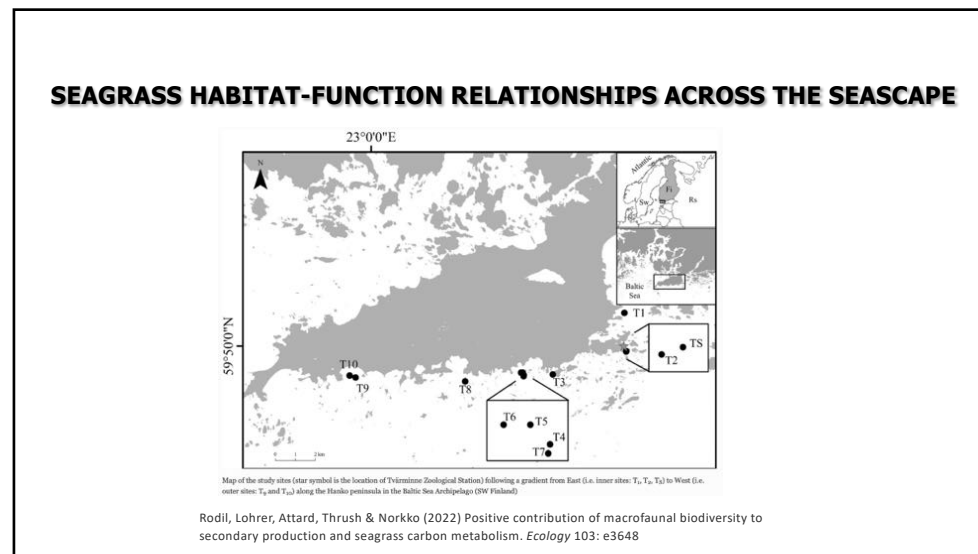
7



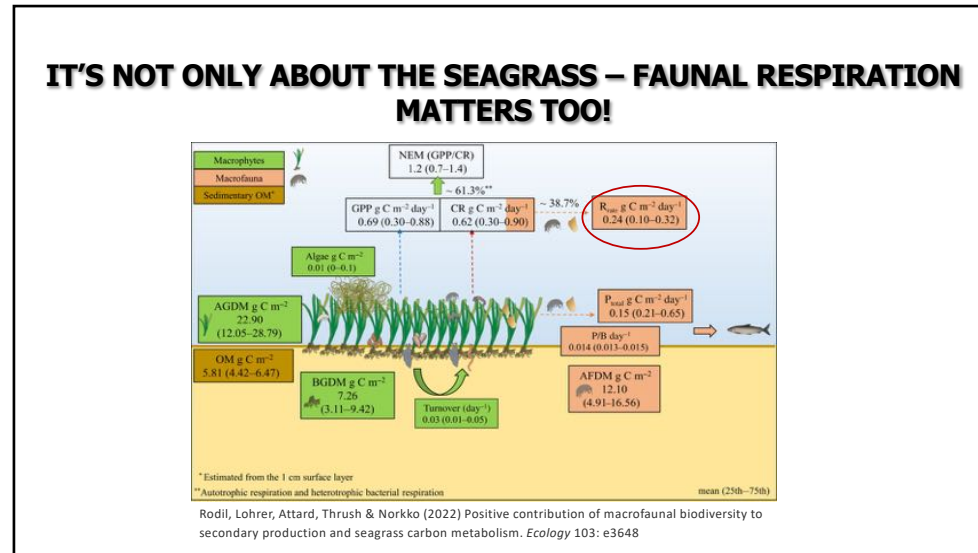
8



9



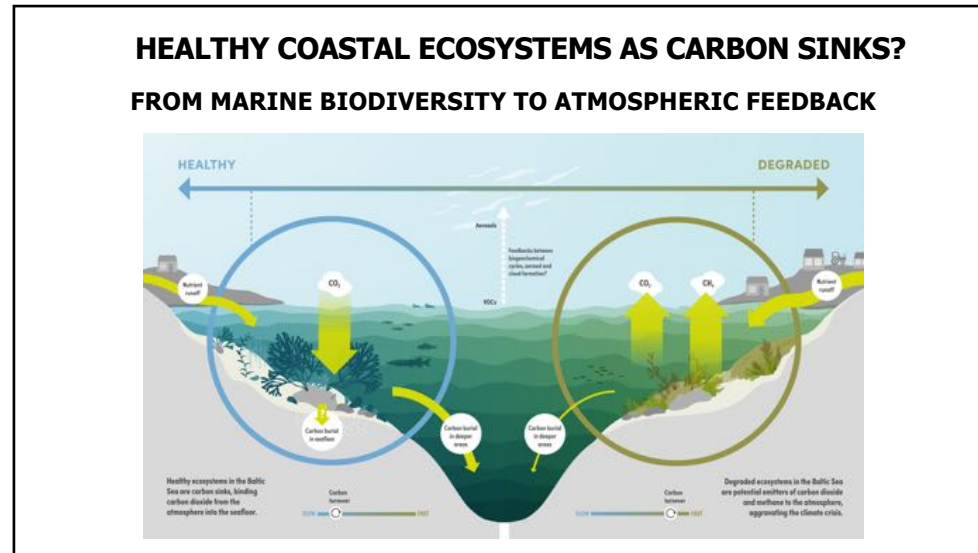
10



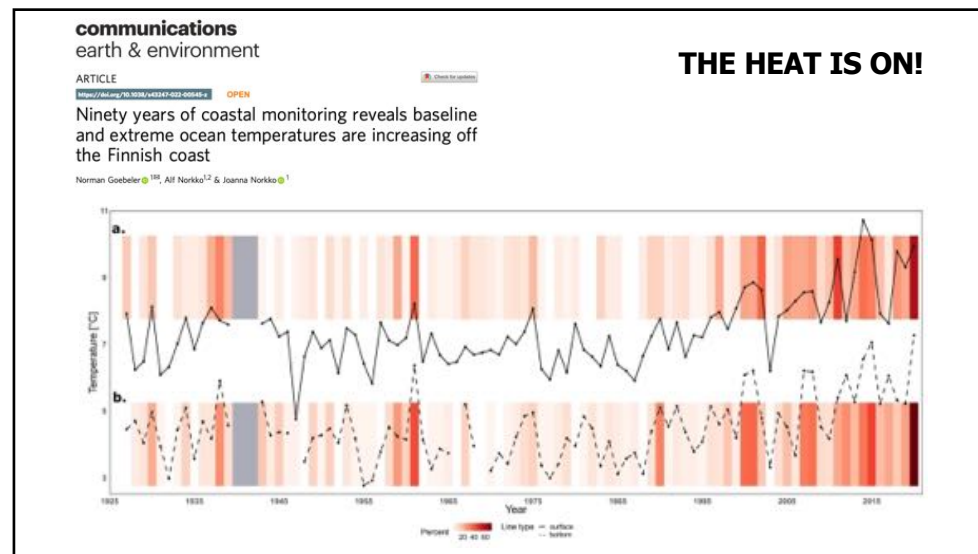
11



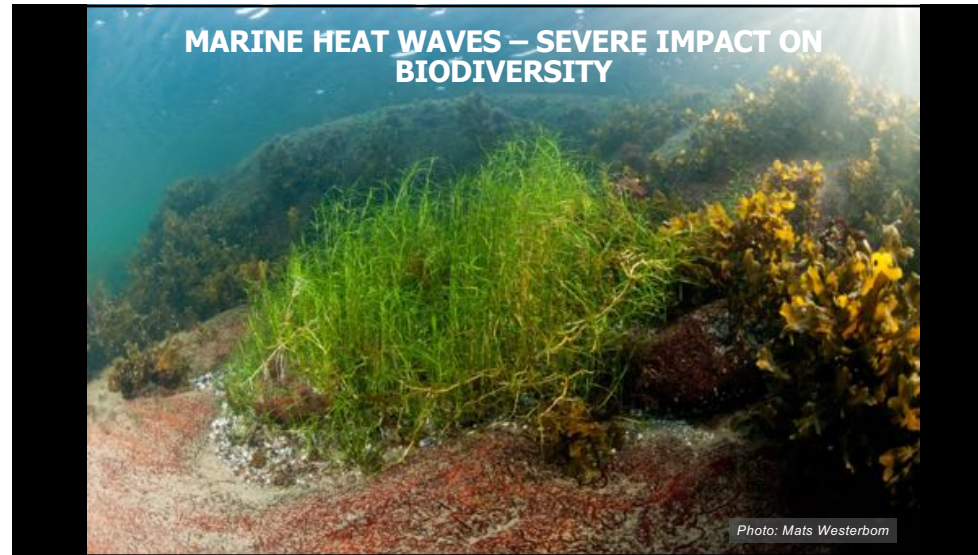
12



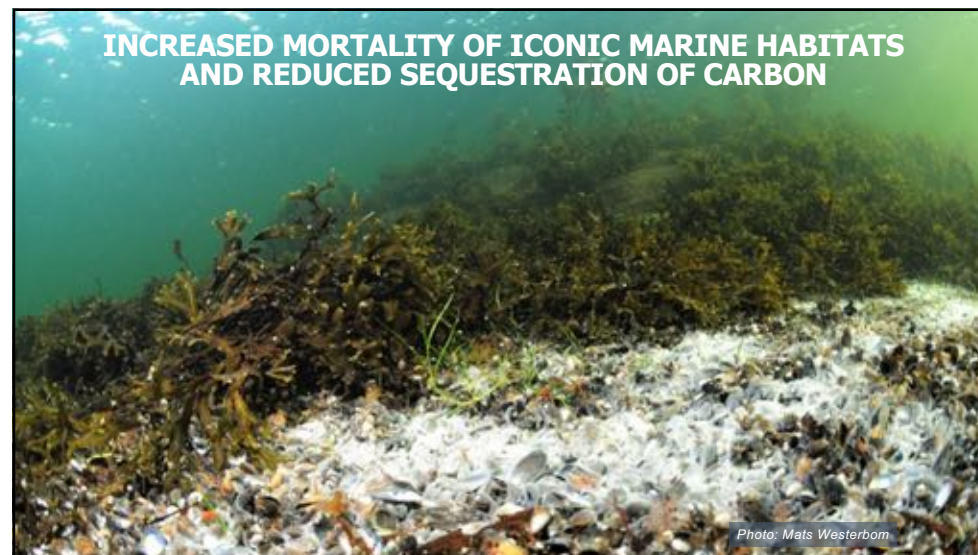
13



14



15



16

SPATIO-TEMPORAL PATCHINESS OF GREENHOUSE GAS EMISSIONS

Research Question:
How do GHG concentrations and fluxes change spatially depending on coastal biodiversity patterns across seasons?

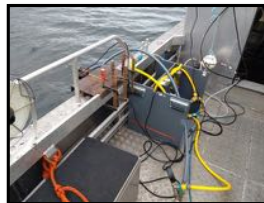


Märta Brunberg et al. in prep

17

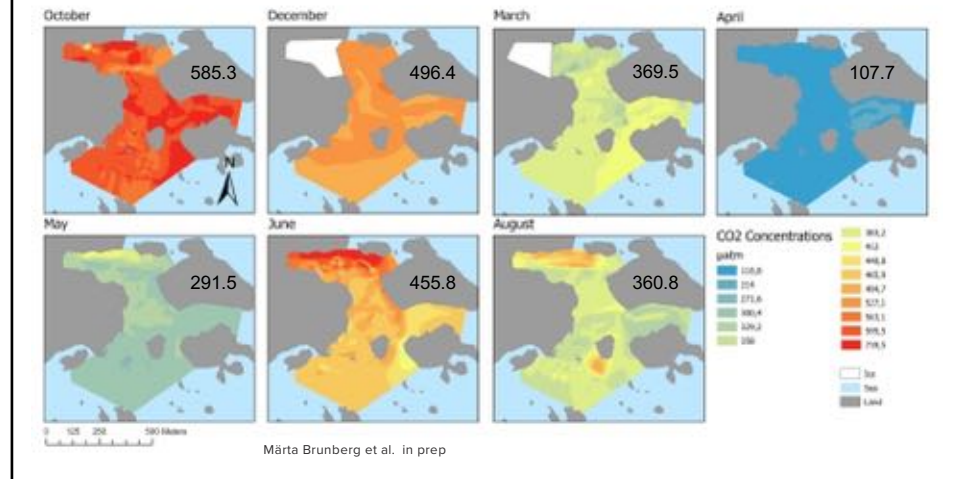
WEGAS

- Continuous measurements of GHG
- Main parameters
 - CO₂, CH₄ and N₂O concentration
 - Stable C isotopes for both CO₂ and CH₄

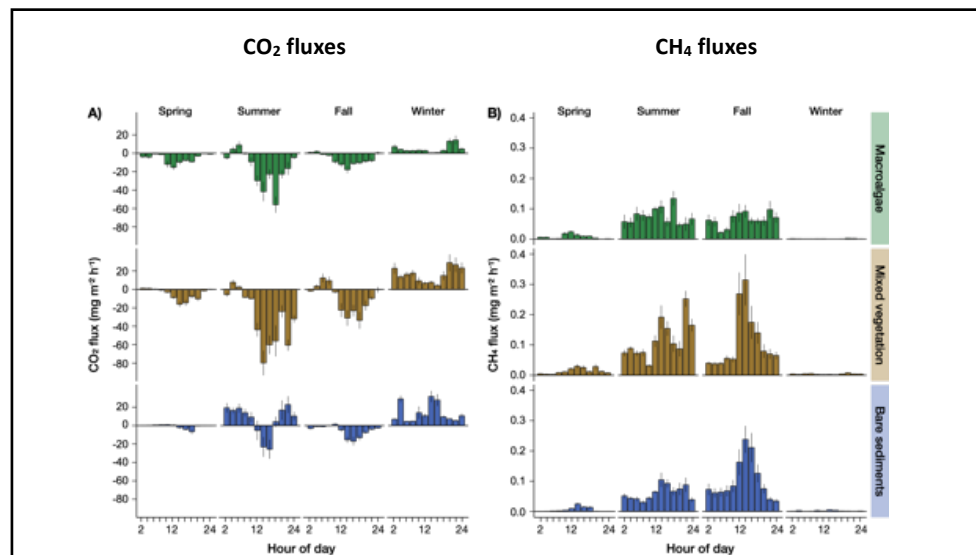


18

CO₂ Concentrations



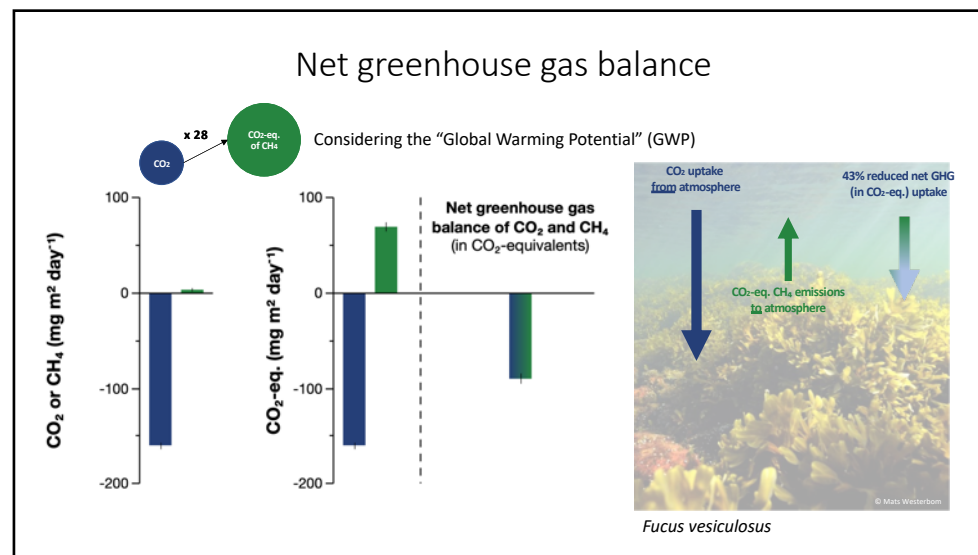
19




20



21



22





nature communications 

Article <https://doi.org/10.1038/s41467-022-35673-9>

Methane emissions offset atmospheric carbon dioxide uptake in coastal macroalgae, mixed vegetation and sediment ecosystems

Received: 15 April 2022
Accepted: 16 December 2022
Published online: 03 January 2023

Florian Roth^{1,2}, Elias Broman^{1,3}, Xiaole Sun^{1,4}, Stefano Bonaglia⁵,
Francisco Nascimento^{1,2}, John Prytherch⁶, Volker Brüchert^{1,8},
Maysoun Lundevall Zarr⁷, Mirja Brunberg⁹, Marc C. Gebel¹,
Christoph Humborg^{1,2} & Alf Norkko^{1,2}

 UNIVERSITY OF HELSINKI  Coast Clim Coastal Ecosystems and Climate Research  Stockholm University  Baltic Sea Centre

23



24